



January 2022

Sun	Mon	Tue	Wed	Thu	Fri	Sat
						1 New Year's Day
2	3	4 Office returns to normal hours	5	6	7	8
9	10	11	12	13	14 The newsletter is released	15
16	17	18	19 Summer issue of <i>Australian Wildlife</i> is released	20	21	22
23	24	25	26 Australia Day	27	28	29
30	31					



February 2022

Sun	Mon	Tue	Wed	Thu	Fri	Sat
		1	2 AWS Board Meeting	3	4	5
6	7	8	9	10	11	12
13	14	15 The newsletter is released Grants and Scholarships are promoted	16	17	18	19
20	21	22	23	24 Annual Award Winners are Notified	25	26
27	28					



Mt Kaputar Pink Slug (*Triboniophorus aff. graeffei*)
Image: Wes Read

March 2022

Sun	Mon	Tue	Wed	Thu	Fri	Sat
		1 First day of autumn	2 AGM and President's Luncheon	3	4	5
6	7	8	9	10	11	12
13	14	15 The newsletter is released Autumn articles are due	16	17	18	19
20	21	22	23	24	25	26
27	28	29	30	31		



Flannel flower (*Actinotus helianthin*)
Image: Megan Fabian

April 2022

Sun	Mon	Tue	Wed	Thu	Fri	Sat
					1	2
3	4	5	6 AWS Board Meeting	7	8	9
10	11	12	13	14 The newsletter is released Photographic Competition is promoted	15 Good Friday	16 Easter Saturday
17 Easter Sunday	18 Easter Monday	19 Autumn issue of <i>Australian Wildlife</i> is released	20	21	22	23
24	25 ANZAC Day	26	27	28	29	30



Red-crowned toadlet (*Pseudophryne australis*)
Image: Ian Cairney

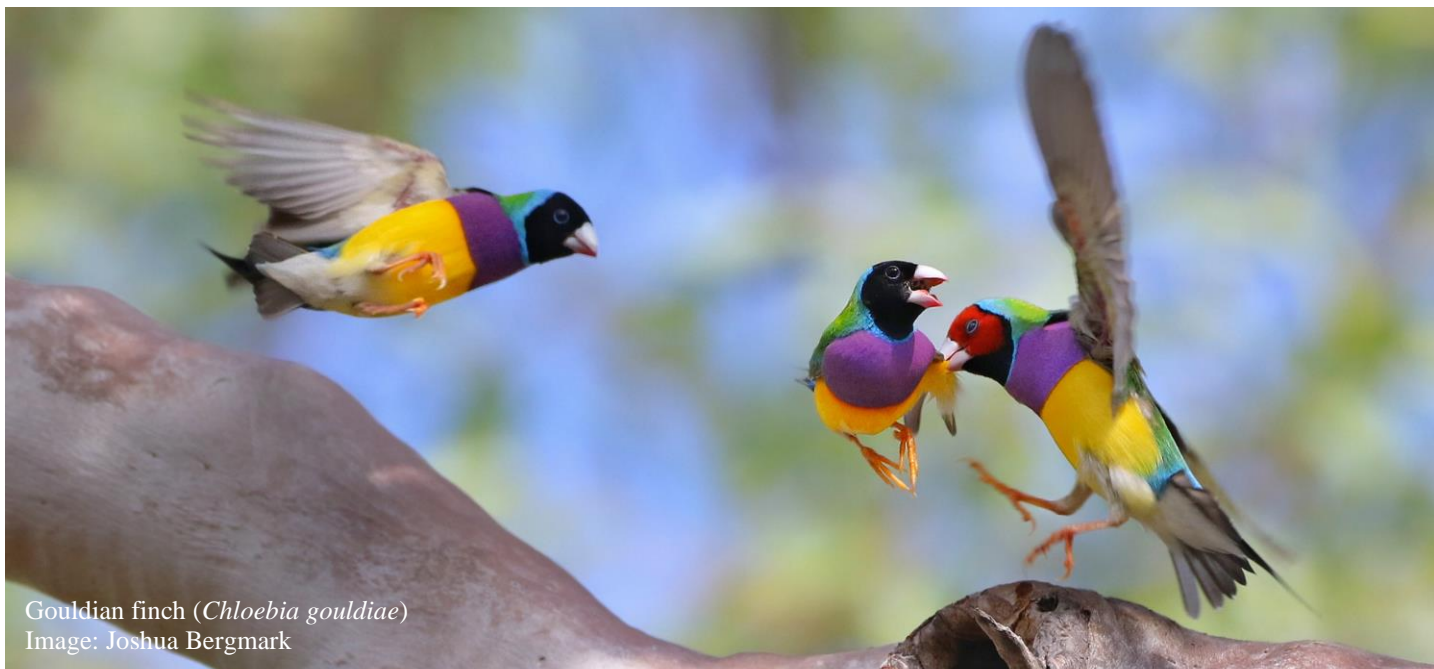
May 2022

Sun	Mon	Tue	Wed	Thu	Fri	Sat
1	2	3	4 AWS Board Meeting	5	6	7
8	9	10	11	12	13	14
15	16 The newsletter is released	17	18	19	20	21
22	23	24	25	26	27	28
29	30	31 Wildlife Ecology Research Scholarship applications due University Research Grants due				



June 2022

Sun	Mon	Tue	Wed	Thu	Fri	Sat
			1 First day of winter AWS Board Meeting	2	3	4
5	6	7	8	9	10	11
12	13 Queen's Birthday (ex. QLD, SA,WA)	14	15 The newsletter is released Winter articles are due	16	17	18
19	20	21	22	23	24	25
26	27	28	29	30 Threatened Wildlife photographic Competition entries due		



Gouldian finch (*Chloebia gouldiae*)
Image: Joshua Bergmark

July 2022

Sun	Mon	Tue	Wed	Thu	Fri	Sat
					1 Photo Comp online voting 1 st – 31 st July	2
3	4	5	6 AWS Board Meeting	7	8 Univeristy Grant winners are notified	9
10	11	12	13	14 The newsletter is released	15 Winter issue of <i>Australian Wildlife</i> released	16
17	18	19	20	21	22	23
24	25	26	27	28	29	30
31						



Weedy seadragon (*Phyllopteryx taeniolatus*)
 Image: Carmela Lendo

August 2022

Sun	Mon	Tue	Wed	Thu	Fri	Sat
	1	2	3 AWS Board Meeting	4	5 Photographic Competition winners are notified	6 <i>Snip Rings for Wildlife</i> was launched in 2020
7	8	9	10	11	12	13
14	15 The newsletter is released	16	17	18	19	20
21	22	23	24	25	26	27
28	29	30	31			



Silver wattle (*Acacia dealbata*).
Image: Megan Fabian.

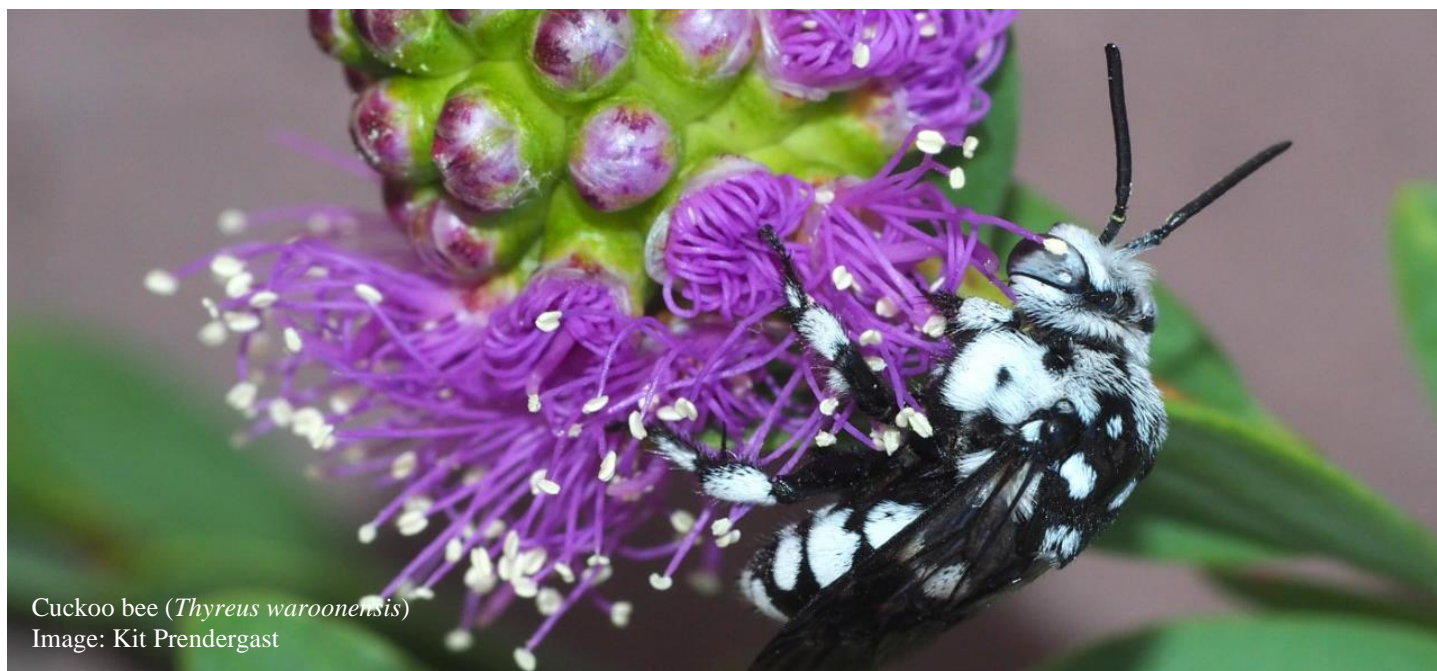
September 2022

Sun	Mon	Tue	Wed	Thu	Fri	Sat
				1 First day of spring	2	3
4	5	6	7 AWS Board Meeting	8	9 University Grant winner articles are due	10
11	12	13	14 The newsletter is released	15 Spring articles are due	16 Colouring-in competition and AWW is promoted	17
18	19	20	21	22	23	24
25	26	27	28	29	30	



October 2022

Sun	Mon	Tue	Wed	Thu	Fri	Sat
						1
2	3 Labour Day	4 Australian Wildlife Week 3 to 9 October	5 AWS Board Meeting	6	7	8
9	10	11	12	13	15 The newsletter is released	15
16	17 Spring issue of <i>Australian Wildlife</i> is released	18	19	20	21	2
23	24	25	26	27	28	29
30	31					



Cuckoo bee (*Thyreus waroonensis*)
Image: Kit Prendergast

November 2022

Sun	Mon	Tue	Wed	Thu	Fri	Sat
		1	2 AWS Board Meeting	3	4	5
6	7	8	9	10	11	12
13	14	15 The newsletter is released	16	17	18	19
20	21	22	23	24	25	26
27	28	29	30 Colouring-in competition entries are due			



Silver Princess (*Eucalyptus caesia*)
Image: Megan Fabian

December 2022

Sun	Mon	Tue	Wed	Thu	Fri	Sat
				1 First day of summer	2	3
4	5	6	7 AWS Board Meeting	8	9	10
11	12	13	14 Colouring-in competition winners are announced	15 The newsletter is released Summer articles are due	16	17
18	19	20	21	22	23	24
25 Christmas Day	26 Boxing Day	27 Boxing Day Observance	28	29	30	31 Annual Award nominations are due